



Stay safe around electricity

Here's your chance to switch onto safety and find all the words relating to electricity and using it safely.

The words run forwards, backwards, up, down and on the diagonal. Time how long it takes you to find them all!

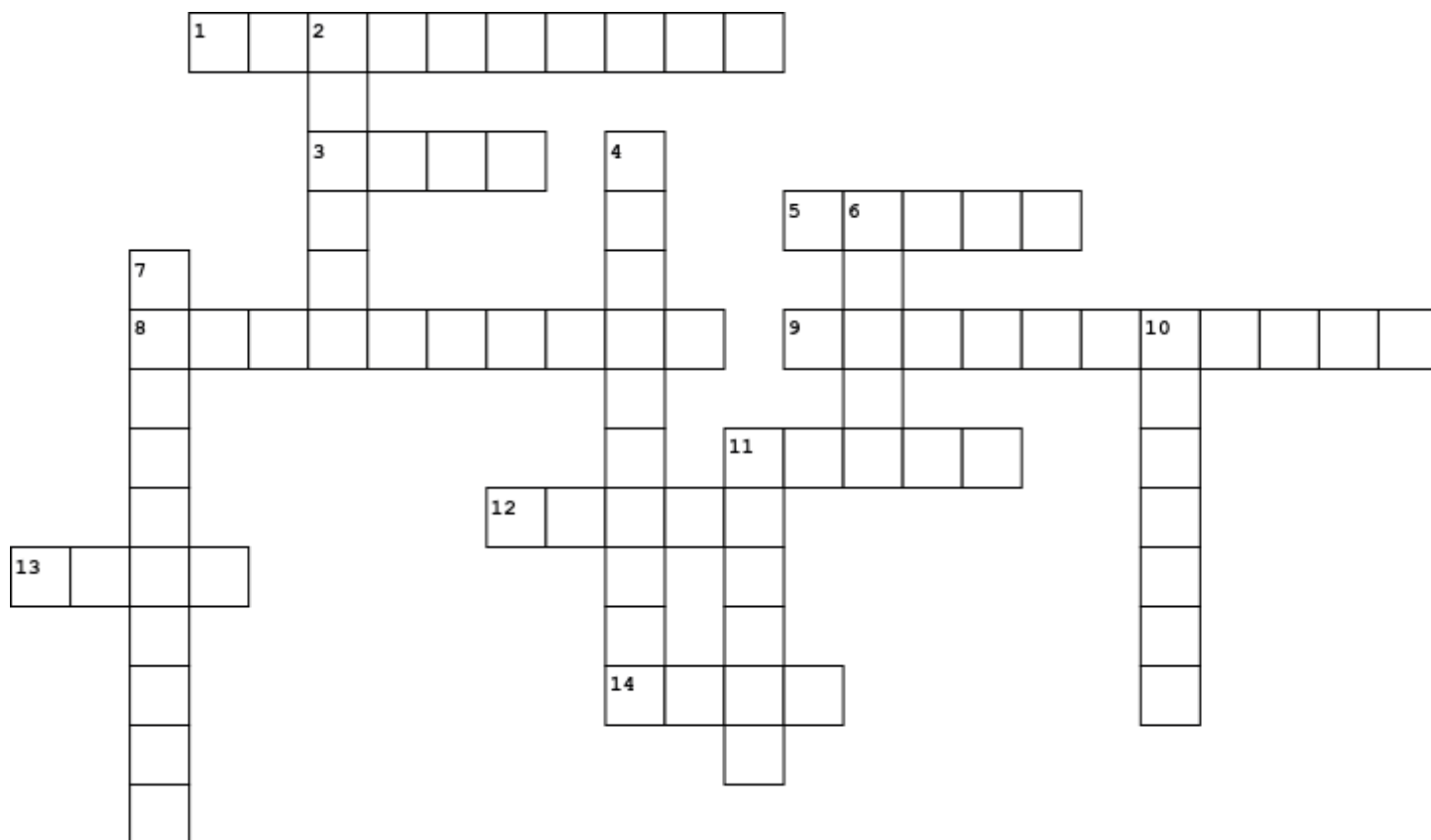
R Y E R E T C S K Q N L Y J E S V L V W
 M F U N P L U G C Z O J T A D M A I M P
 M Y R O T A R E N E G W I I H O H G D Y
 Y J N J P A P P L I A N C E S K R H R A
 R E G N A D R E T A W M I I C E H T Z O
 S N O I T C U R T S N I R B L D N N T I
 G V G Q Z K I L O W A T T Y X E K I N G
 Q E Y T I K M R O T S R C Q P T O N I Y
 C Z Y Z D E R A P E R P E B C E G G O C
 G A M N A I C I R T C E L E I C M U P N
 B F B W M S A F E T Y H E R O T S F R E
 G V F L Q E X T E N S I O N C O R D E G
 R S A F E T Y S W I T C H O A R F R W R
 I T E C N A N E T N I A M U U P H Z O E
 M S B P O W E R P O L E R F O H C G P M
 L E K C T N N S S W I T C H B O A R D E
 L T C Y H C T I W S T H G I L S U R G E
 A B S R Y G R E N E H I C X S X L N Q T
 M S E L E C T R I C S H O C K Y U J H A
 A E N I L R E W O P K C A B Y G G I P K

Hidden words

APPLIANCES
 BE PREPARED
 CABLE
 DANGER
 ELECTRICIAN
 ELECTRICITY
 ELECTRIC SHOCK
 EMERGENCY
 ENERGY
 EXTENSION CORD
 GENERATOR
 INSTRUCTIONS
 KILOWATT
 LIGHTNING
 LIGHT SWITCH
 MAINTENANCE
 PIGGY BACK
 POWERLINE
 POWERPOINT
 POWER POLE
 SAFETY SWITCH
 SMOKE DETECTOR
 STORM KIT
 SURGE
 SWITCHBOARD
 UNPLUG
 WATER



Stay safe around electricity



Across

1. Spell the phone number to call in an electrical emergency (6,4)
3. You should never ---- in flood waters (4)
5. Keep appliances away from ----- (5)
8. When flying your kite, stay away from these (10)
9. Play away from electrical equipment and ----- (11)
11. This is a conductor of electricity (5)
12. Install ----- detectors. Test them regularly and change the battery (5)
13. ---- before you dig (4)
14. Look up before climbing a ---- (4)

Down

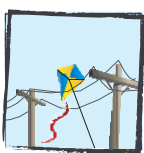
2. Go ----- during an electrical storm (6)
4. You plug electrical appliances into this (10)
6. Tell an ----- if you see a dangerous electrical situation (5)
7. Switch off the power before plugging or unplugging ----- and hold the plug, not the cord (10)
10. Never put a knife in a ----- (7)
11. You should stay 8 ----- away from fallen powerlines (6)



Stay safe around electricity

Here are six pictures of dangerous situations involving electricity.

Explain why each one is dangerous (what might happen?)



Picture 1 - This is dangerous because



Picture 2 - This is dangerous because



Picture 3 - This is dangerous because



Picture 4 - They should



Picture 5 - Everyone should



Picture 6 - I would

Here are six safety rules. Each rule goes with one of the six pictures you have seen already.

Match the right picture to each rule.

- Picture Number _____ Rule: Stay away from electricity substations!
- Picture Number _____ Rule: Electricity and water do not mix!
- Picture Number _____ Rule: Know what to do in an electrical emergency!
- Picture Number _____ Rule: Be careful around electricity poles and wires when you play!
- Picture Number _____ Rule: If you see a dangerous situation tell an adult!
- Picture Number _____ Rule: Metal is a conductor of electricity and can be dangerous!



Stay safe around electricity

Playing safe will help you reach the finish. Doing things that are not safe around electricity will send you backwards.

57	58	You threw shoes at powerlines	59	60	61	62	63 FINISH
56	55	54	53	You played with power points	52	51	50 You stayed away from substations
43	44	45	46	47	48	49	
You flew a kite at the park		You tested your home safety switch					
You jumped on a green	42	41	40	39	38	37	36
		You switched off before unplugging				You piggybacked power plugs	
29	30	31	32	33	34	35	
						You kept water away from appliances	
28	27	You climbed a tree near a powerline	26	25	You put a knife in a toaster	24	23
	You made the safe call					You asked an adult for help	22
15	16	17	18	19	20	21	
					You turned on a light switch with wet hands		
14	13	12	11	10	9	8	
	You played away from powerlines						
1	2	3	4	5	6	7	
START		You followed a warning sign			You reported a broken streetlight		

You can play with 2-4 people and will need a dice and some counters (e.g. 5 cent coins).



How to play

1. Throw the dice.
2. The person with the highest score goes first.
3. Take turns to throw the dice.
4. Move the number of spaces on the dice.
5. If you land on a ladder, go up.
6. If you land on a snake, go down.
7. The winner is the first to reach the 'Finish'.